

MONTHLY MEMBERSHIP PROGRESS REPORT

LOCATION NETHERLANDS

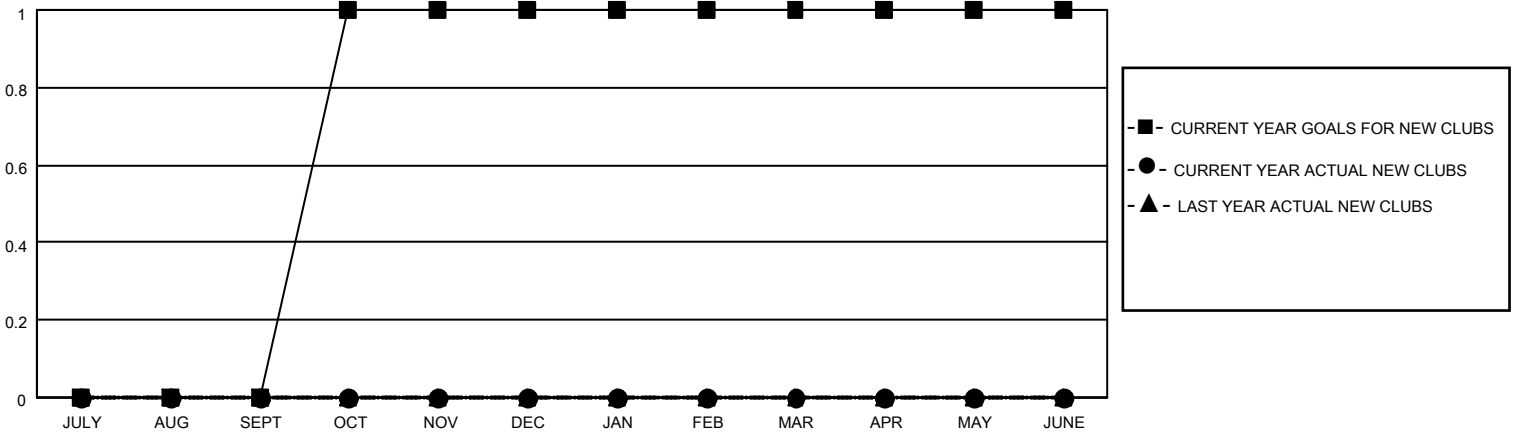
District 110BZ

Results as of: 4/30/2022

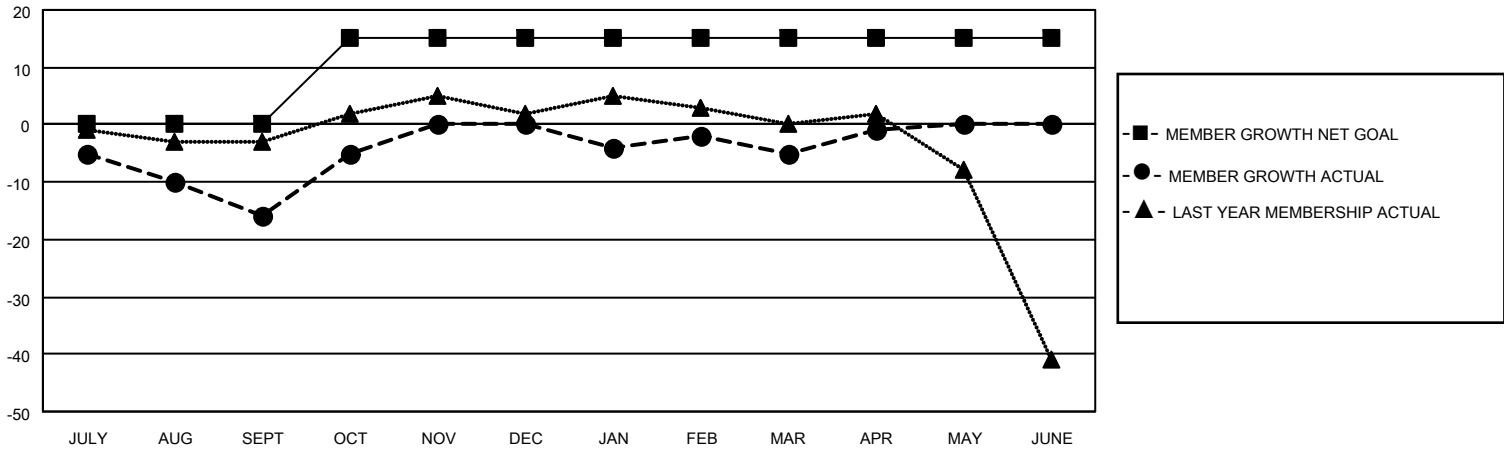
Clubs			
RESULTS FOR 2021-2022			
QUARTER	NEW CLUB GOAL	NEW CLUBS	DROPPED CLUBS
JULY/AUG/SEPT	0	0	0
OCT/NOV/DEC	1	0	0
JAN/FEB/MAR	0	0	0
APR/MAY/JUNE	0	0	0

Members			
RESULTS FOR 2021-2022			
QUARTER	MEMBER GROWTH NET GOAL	MEMBER GROWTH ACTUAL	DROPPED MEMBERS ACTUAL (including transfers)
JULY/AUG/SEPT	0	6	21
OCT/NOV/DEC	15	38	18
JAN/FEB/MAR	0	14	18
APR/MAY/JUNE	0	10	6

GOALS AND ACTUAL NEW CLUBS CUMULATIVE



GOALS AND ACTUAL MEMBERS CUMULATIVE



DROPPED CLUBS: 0

33 CLUBS OF 71 ADDED 1 OR MORE NEW MEMBERS

GENDER DISTRIBUTION

MALE	1,559 (83.91%)
FEMALE	299 (16.09%)
NON BINARY	0 (0.00%)
PREFER NOT TO ANSWER	0 (0.00%)

DROPPED MEMBERS

[CLICK HERE FOR CUMULATIVE MEMBERSHIP DATA](#)

DECEASED	11
CLUB CANCELLED	0
OTHER	52
TOTAL	63

TOTAL FAMILY UNIT MEMBERS	0
FAMILY MEMBERS PAYING HALF DUES	0